

Alexander Pedals Firmware Update Procedure

12/21/2016

v1.1

Equipment Required:

USB-equipped Alexander Pedal

Mac running OSX 10.6.8 or higher

(or) Windows PC running Windows XP or higher

USB A to Mini-B cable

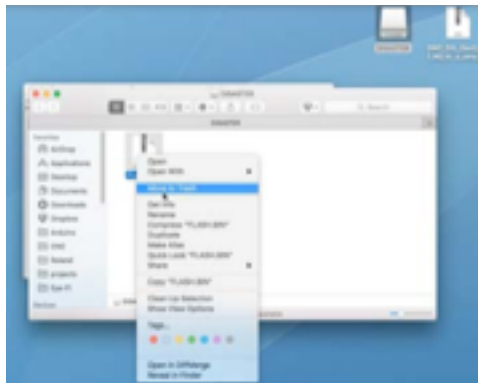
Firmware Update Procedure

[MAC OS X]

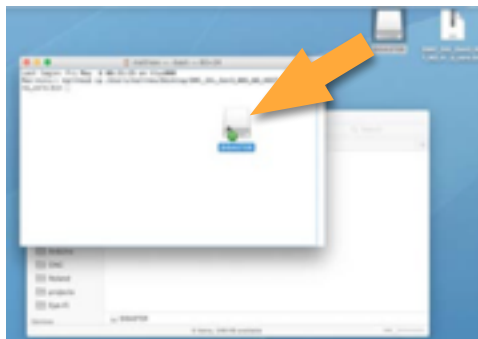
1. Download and unzip the firmware archive file to your desktop or other convenient location.
2. Open the Terminal application, found in /Applications/Utilities
3. Power the controller off and remove any MIDI, expression, DC, and USB cables.
4. Plug the USB-A cable end into the computer.
5. Hold the **TAP TEMPO FOOTSWITCH** and insert the USB Mini-B plug into the controller. The tap LED should light and then flash slowly.
6. A new removable drive named DISASTER should appear on your desktop.



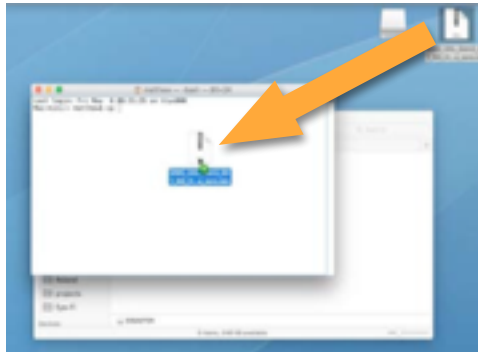
7. Open the DISASTER drive by double-clicking on its icon. Drag the FLASH.BIN file to the Trash. If Mac OS X asks if you are sure you want to delete the file, select "Delete."



8. Type `cp` followed by a space into the Terminal window, then drag the icon for the firmware .BIN file into the Terminal.



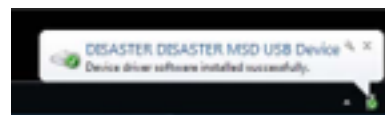
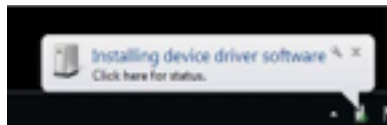
9. Drag the DISASTER drive icon into the Terminal.



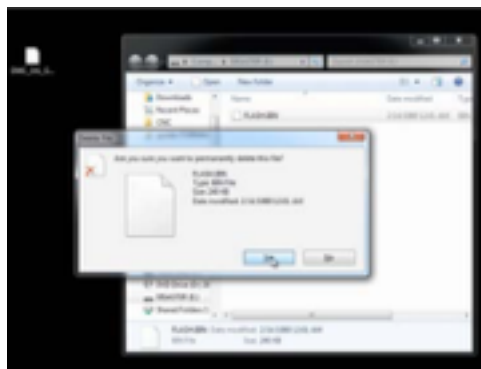
10. Press Enter to complete the copy operation.
11. Control-click or right-click the DISASTER drive icon and select "Eject 'DISASTER.'"
12. Remove the USB cable from the pedal. The pedal is now ready for use.

[WINDOWS]

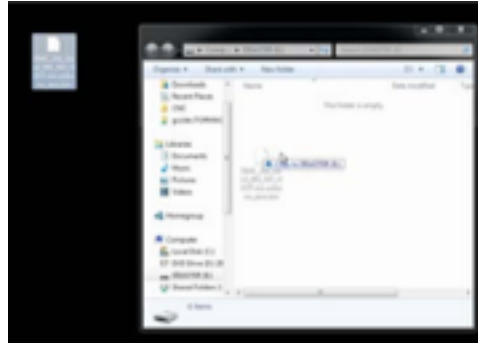
1. Download and unzip the firmware archive file to your desktop or other convenient location.
2. Power the controller off and remove any MIDI, expression, DC, and USB cables.
3. Plug the USB-A cable end into the computer. Hold the **TAP TEMPO footswitch** and insert the USB Mini-B plug into the controller. The tap tempo LED should light and then flash slowly.
4. Windows may run the Found New Hardware wizard at this point. Windows should install a driver for the bootloader and then show a new removable drive called DISASTER.



5. Open the DISASTER drive and delete the FLASH.BIN file.



6. Drag the firmware .BIN file to the DISASTER drive.



7. Eject the DISASTER drive.
8. Remove the USB cable from the pedal. The pedal is now ready for use.